

DERBY ROAD
01 GROUND FLOOR GENERAL ARRANGEMENT PLAN 1:100

KEY PLAN

REV

DESCRIPTION

DATE

A	FOR COMMENT	13/03/22
B	REVIEW AMENDMENTS	06/12/23
C	ISSUED FOR CONSTRUCTION	14/03/24
D	CLIENT OFFICE AMENDMENTS GENERAL ISSUE	28/02/24
E	DIMENSIONS ADDED TO DRIVEWAY	05/04/24
F	WINDOWS ADDED	17/04/24

COPYRIGHT

ALL RIGHTS RESERVED. THIS WORK IS COPYRIGHT AND CANNOT BE REPRODUCED OR COPIED IN ANY FORM OR BY ANY MEANS (GRAPHIC, ELECTRONIC OR MECHANICAL, INCLUDING PHOTOCOPYING WITHOUT THE WRITTEN PERMISSION OF THE PRINCIPAL, UNDER THE TERMS OF THE CONTRACT. ANY LICENCE, EXPRESS OR IMPLIED, TO USE THE DOCUMENT FOR ANY PURPOSE WHATSOEVER IS RESTRICTED TO THE TERMS OF THE CONTRACT.

DIMENSIONS

USE FIGURED DIMENSIONS. DO NOT SCALE. CONTRACTORS MUST VERIFY ALL DIMENSIONS ON THE SITE BEFORE COMMENCING ANY WORK OR MAKING ANY SHOP DRAWING WHICH MUST BE SUBMITTED AND REVIEWED BEFORE MANUFACTURE.

FIXTURES, FITTINGS & EQUIPMENT SPECIFICATIONS

SUBSTITUTE FIRE EQUIPMENT SPECIFICATIONS
THE FIT-OUT DESIGN AND DOCUMENTATION HAS BEEN COMPLETED ON THE BASIS OF FIRE AND EQUIPMENT ADVISED TO THIS OFFICE AT THE TIME OF BRIEFING THE DESIGN. THE DESIGN PROVIDES FOR FIRE AND EQUIPMENT INCORPORATES SPATIAL ALLOCATIONS, SERVICES, LOADING AND ACCESS CLEARANCES AND WHERE APPROPRIATE SERVICES REQUIREMENTS, VARIOUS DUE REGARD FOR SURROUNDING PATTERNS AND FITTINGS. IT SHOULD BE NOTED THAT SUBSTITUTE FIRE OR EQUIPMENT WITH ALTERNATE SPECIFICATIONS SHOULD NOT BE PROVIDED PRIOR TO VALIDATING THOSE SPECIFICATIONS AGAINST THE ITEM CONTROL, SCHEDULE AND DESIGN PROVISIONS IN THE MODEL. THIS OFFICE ACCEPTS NO RESPONSIBILITY FOR THE PROCUREMENT OF SUBSTITUTE FIRE AND EQUIPMENT WHICH HAS NOT BEEN REVIEWED AND VALUED AGAINST THE ORIGINAL DESIGN PROVISIONS.

SERVICE POINTS DISCLAIMER

THE SERVICE POINTS IDENTIFIED ON THESE DRAWINGS HAVE BEEN OVERLAPPED FROM THE BUILDING SERVICES ENGINEERING MODEL, AND ARE PROVIDED FOR INFORMATION AND RET-OUT PURPOSES ONLY. WE HAVE BEEN ADVISED BY THE SERVICES ENGINEERS THAT THE POINTS REPRESENTED IN THESE DRAWINGS ARE CORRECT AT THE TIME OF PUBLICATION. THIS OFFICE DOES NOT WARRANT THE ACCURACY OF THIS DATA. REFER TO THE BUILDING SERVICES ENGINEERING DOCUMENTATION FOR THE INSTALLATION OF THE SERVICE POINTS AND THE INTERFACE BETWEEN THE SERVICE POINTS AND THE RESPECTIVE ENGINEERING SYSTEMS.

Architect

Forley + Grant Architecture

Suite 30 Level 1, 1141 Botany Lane

Botany NSW 2026

Phone: 0491 622 223

Email: james@lgarch.com.au

Horwath Architect James Grant Reg 161546

Builder

DONNELLEY CONSTRUCTIONS

Office: 9534 1233

PO Box 8132, Baulkham Hills BC NSW 215

Client

HEALTH INFRASTRUCTURE

Project

NEPEAN HOSPITAL TAM

Derby Street, Kingswood, NSW, 2747

Drawing name

GROUND FLOOR - GENERAL ARRANGEMENT PLAN

Scale

AS SHOWN @ A0

Date Printed

17/4/2024

Drawn

JG

Approved

JG

Job Number

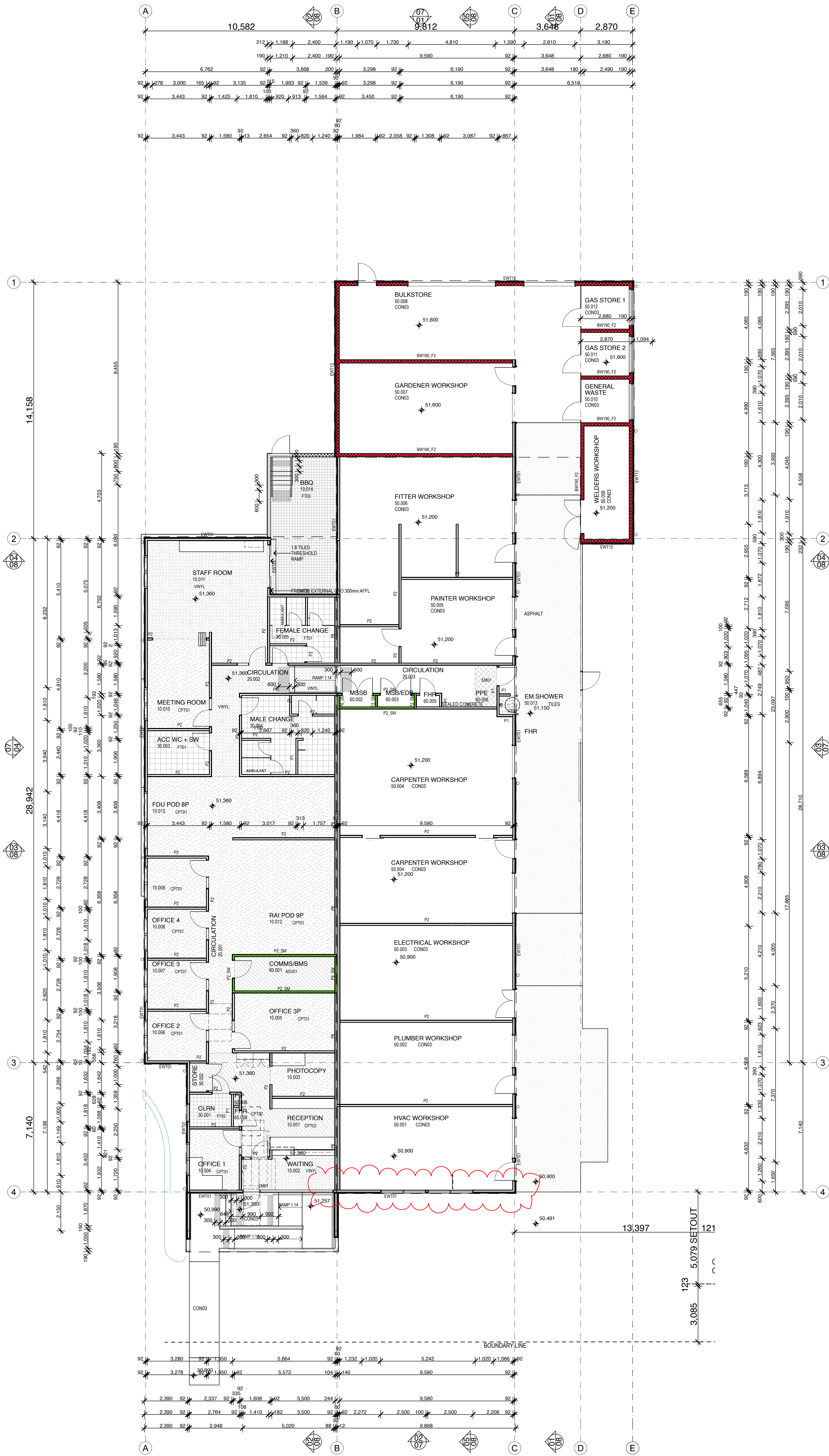
2124

Drawing Number

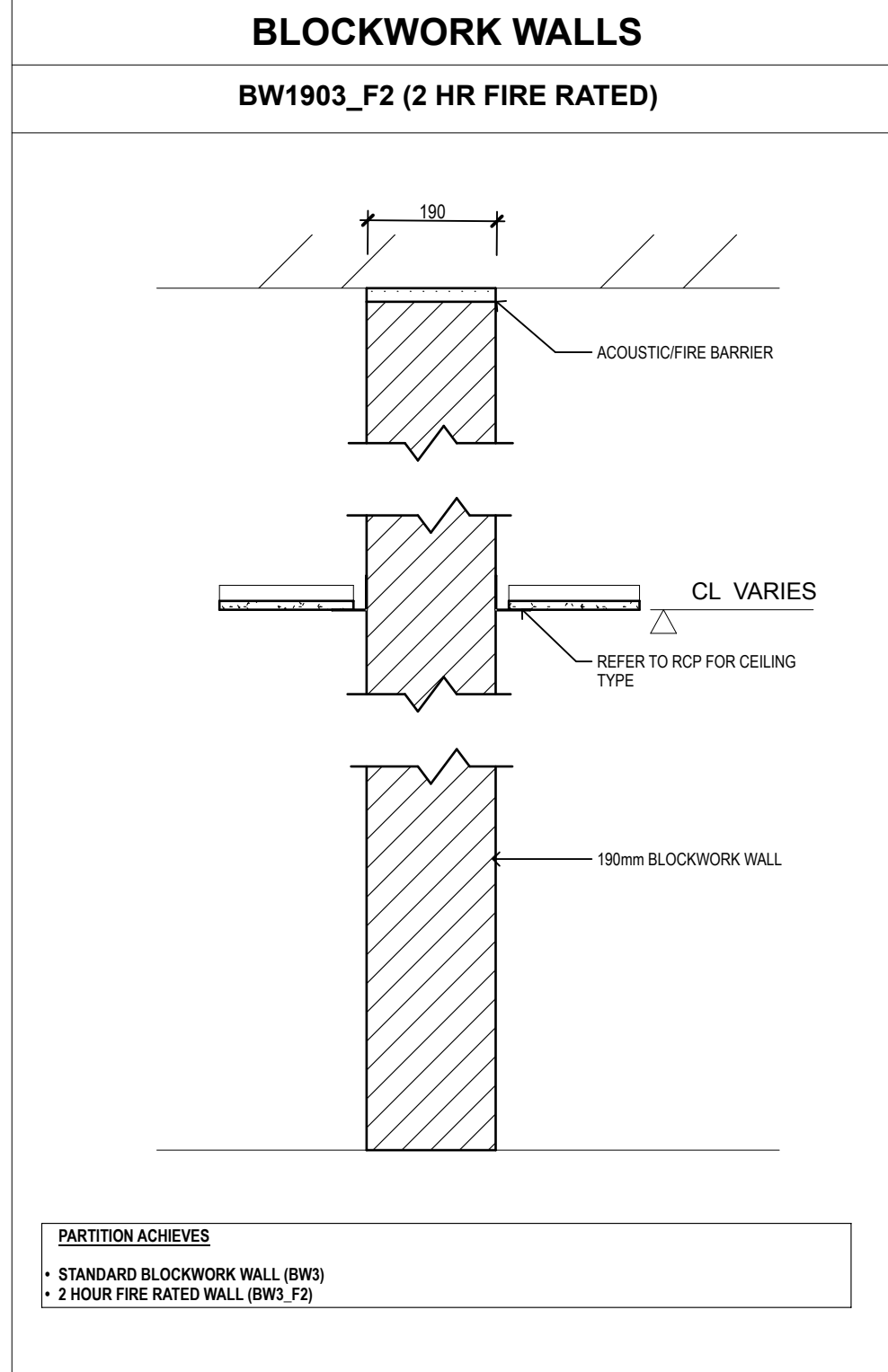
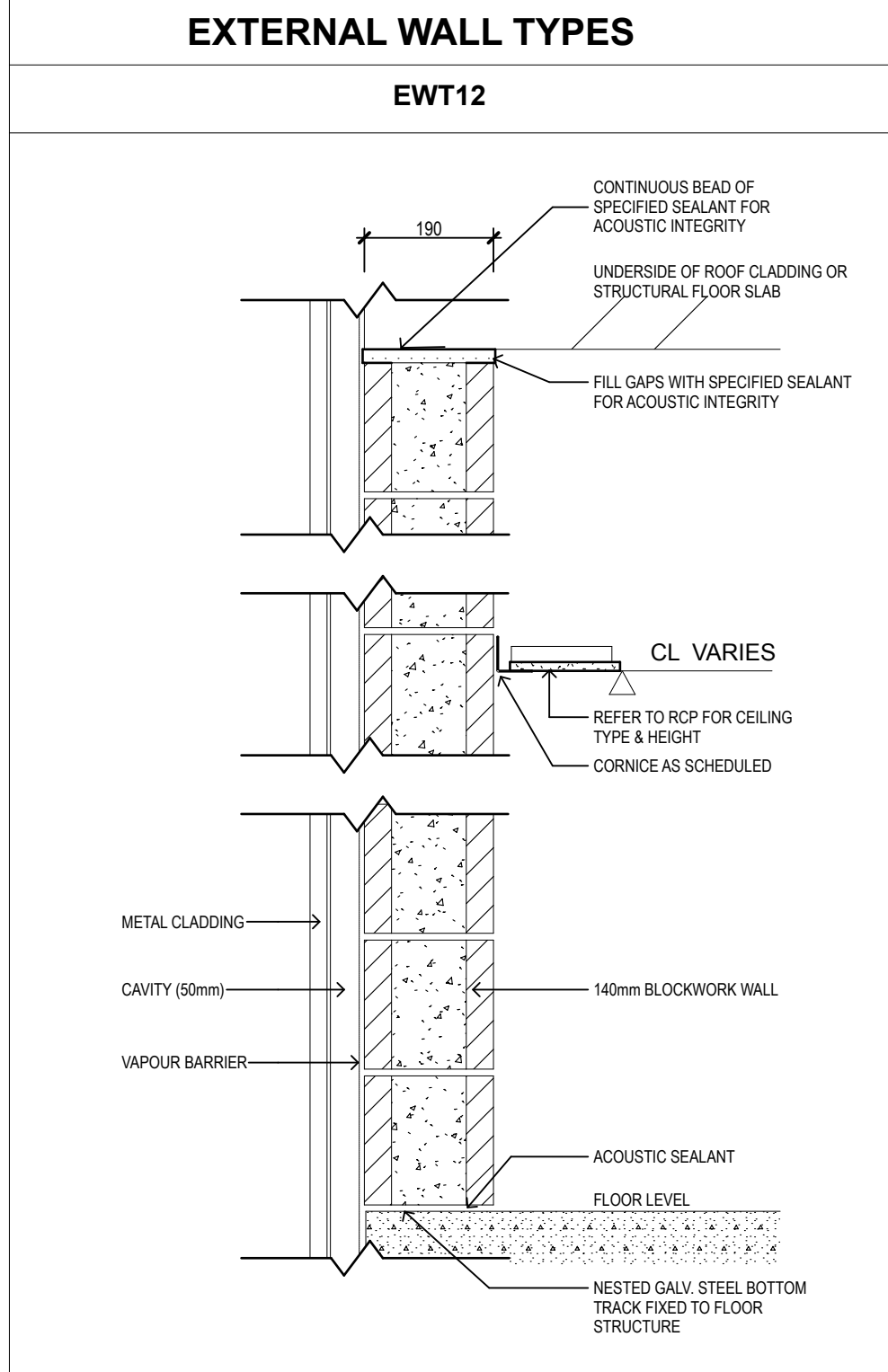
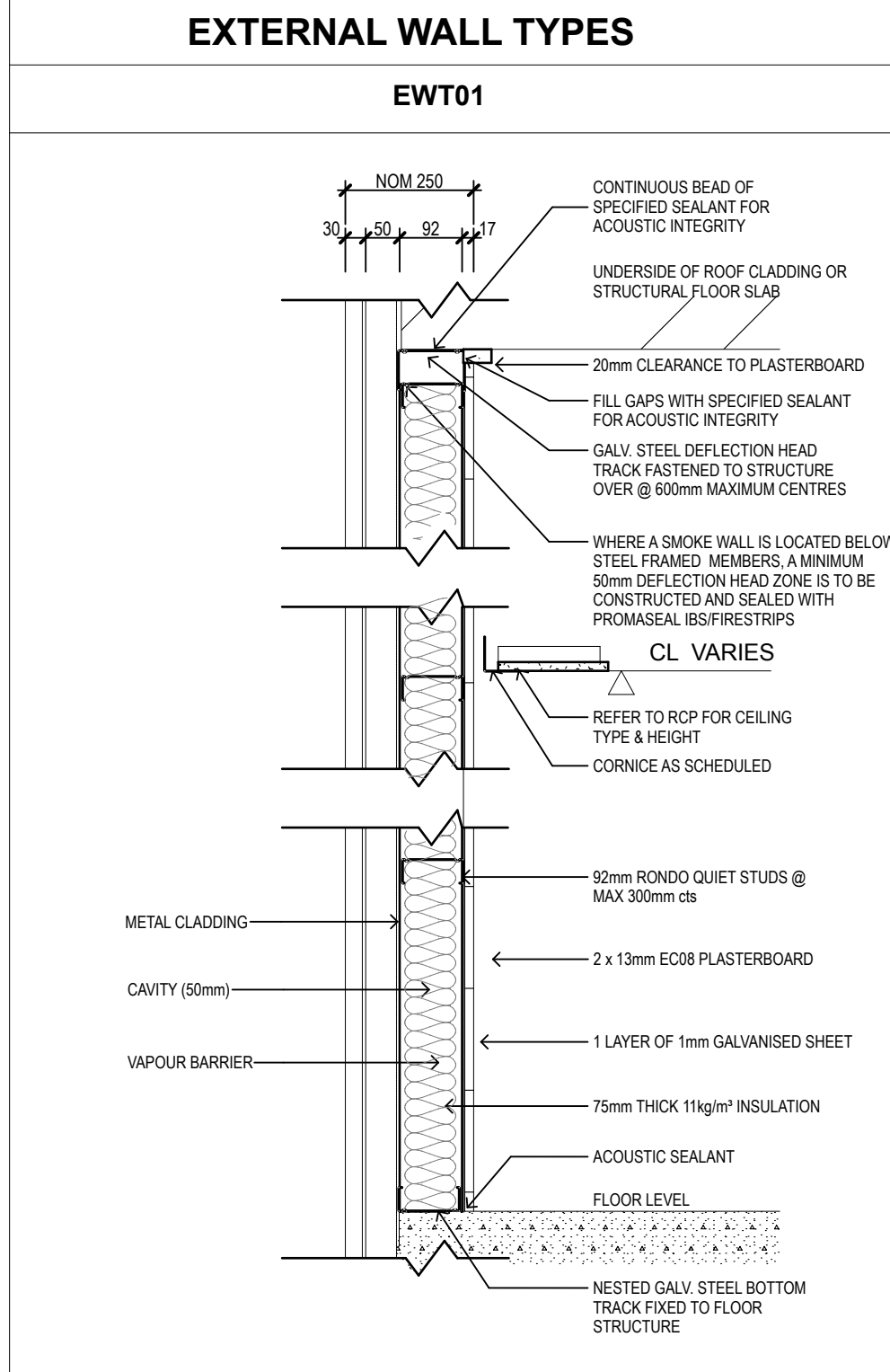
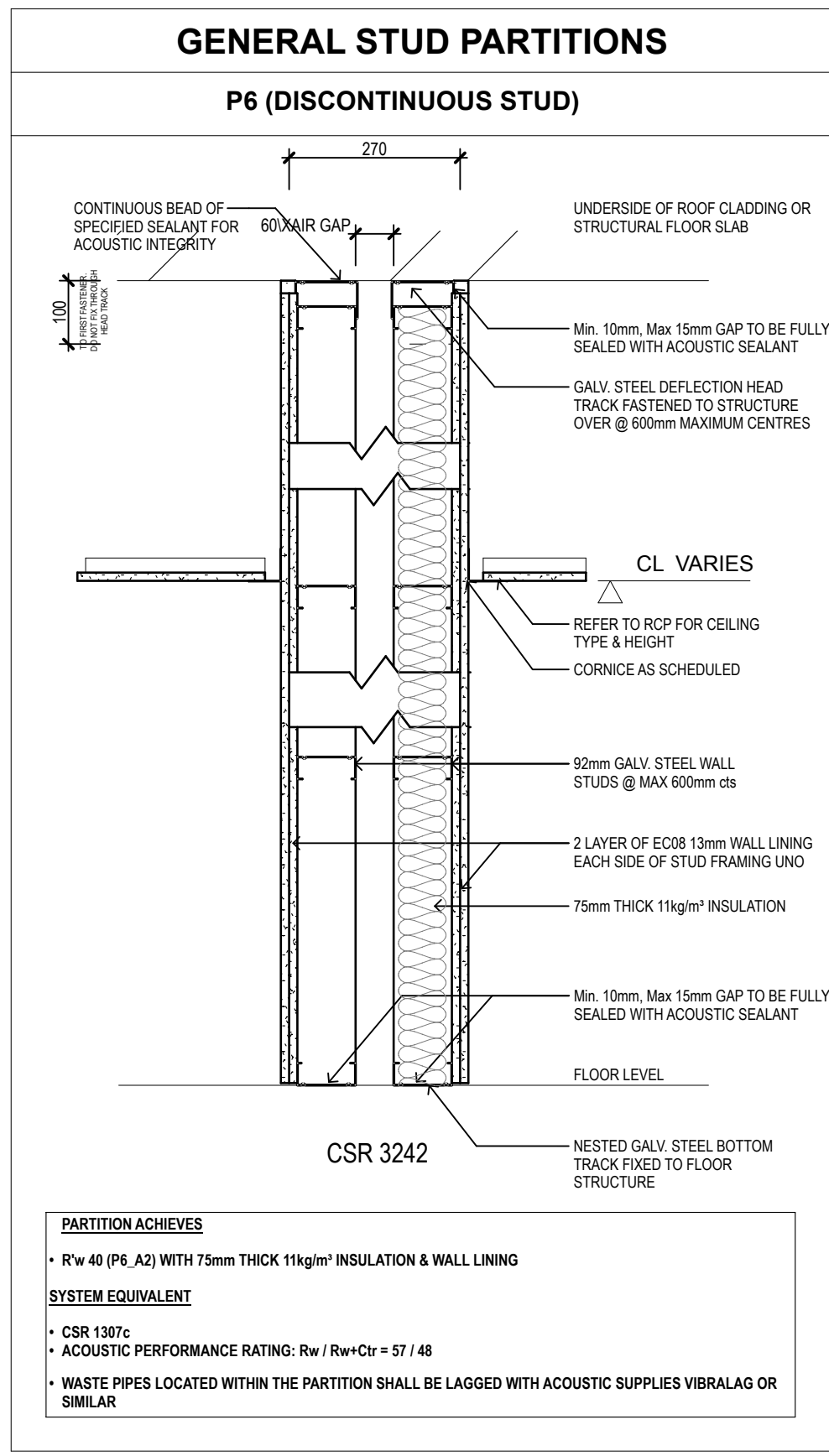
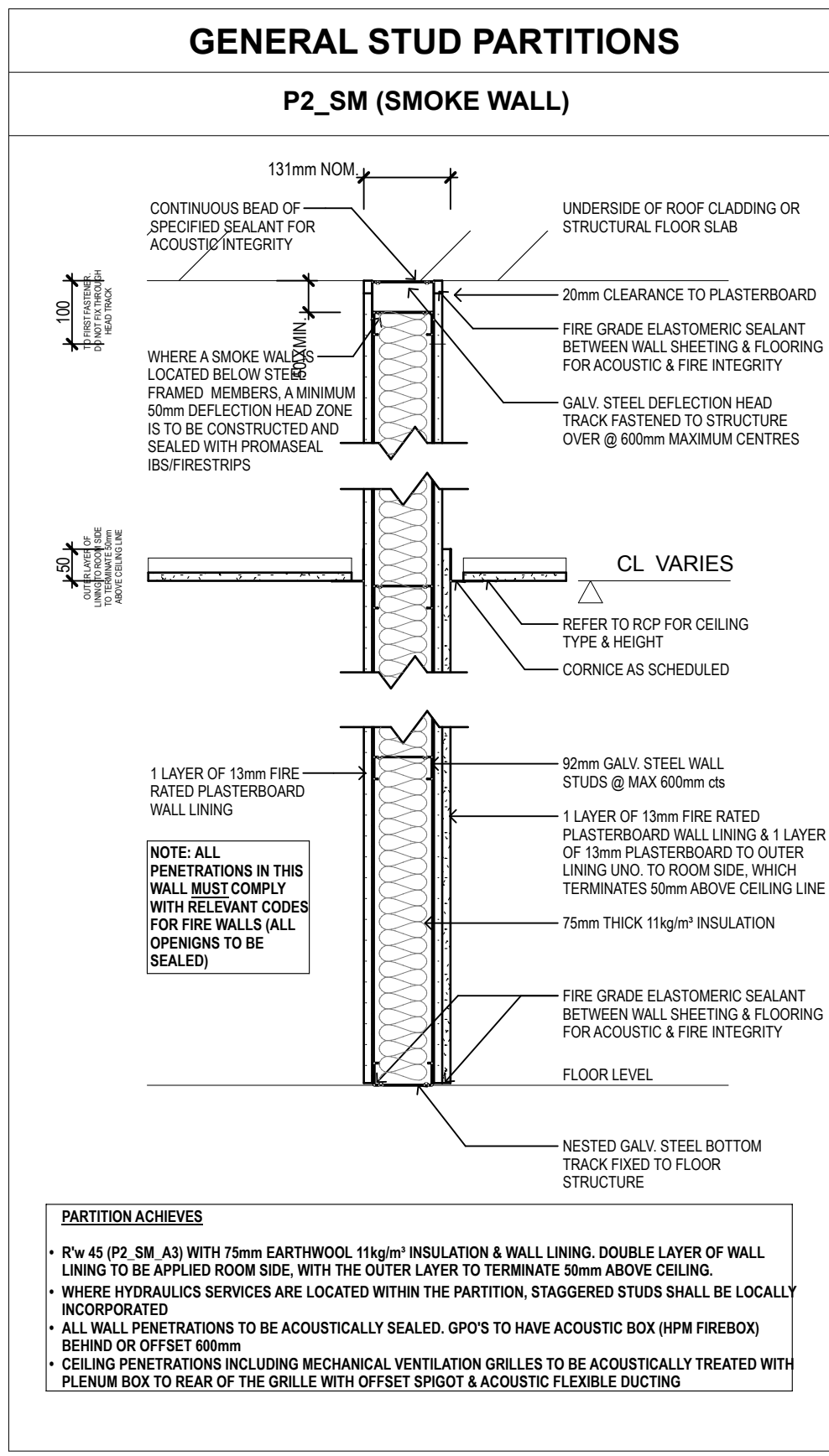
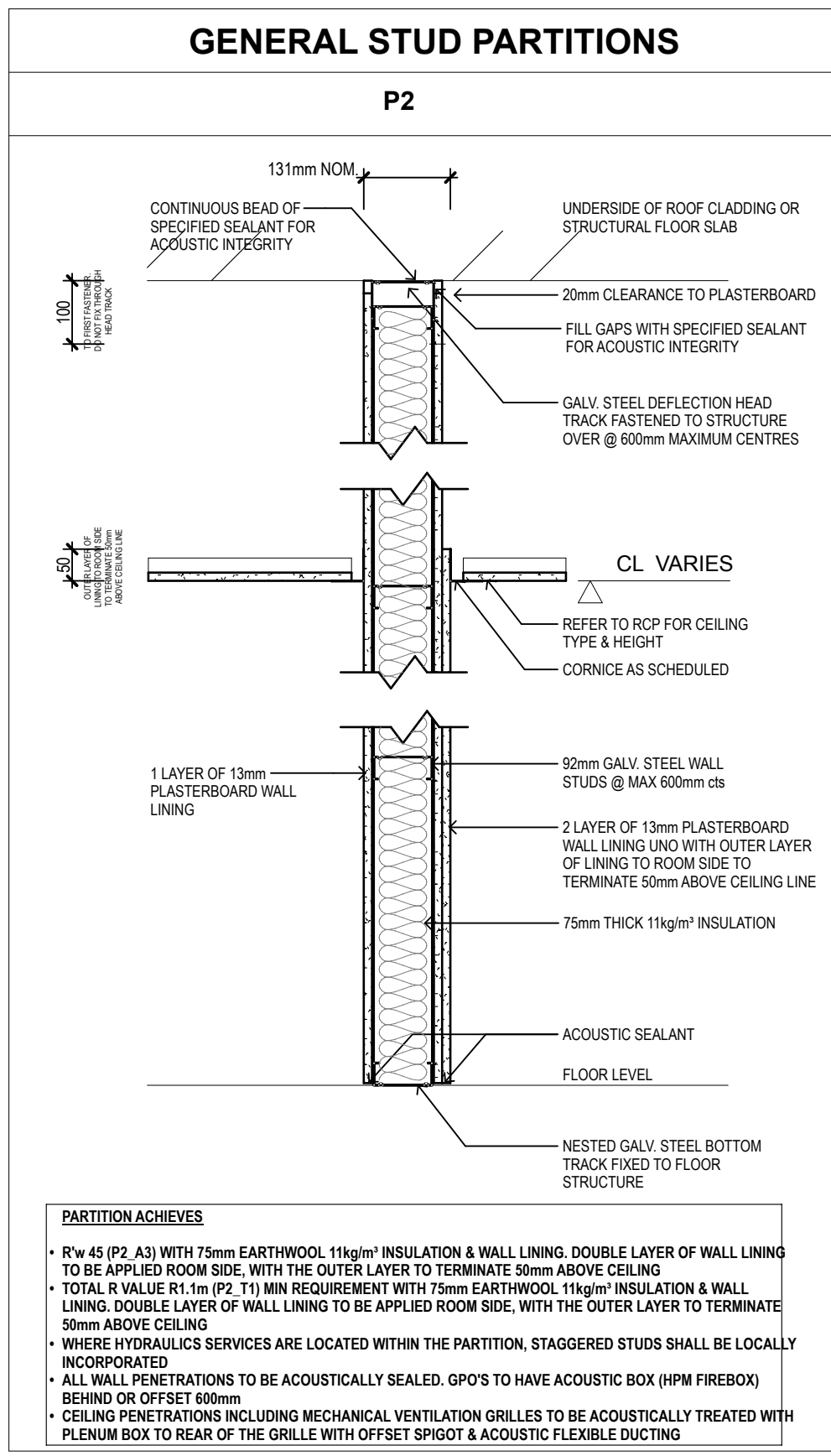
A-01

REVISION

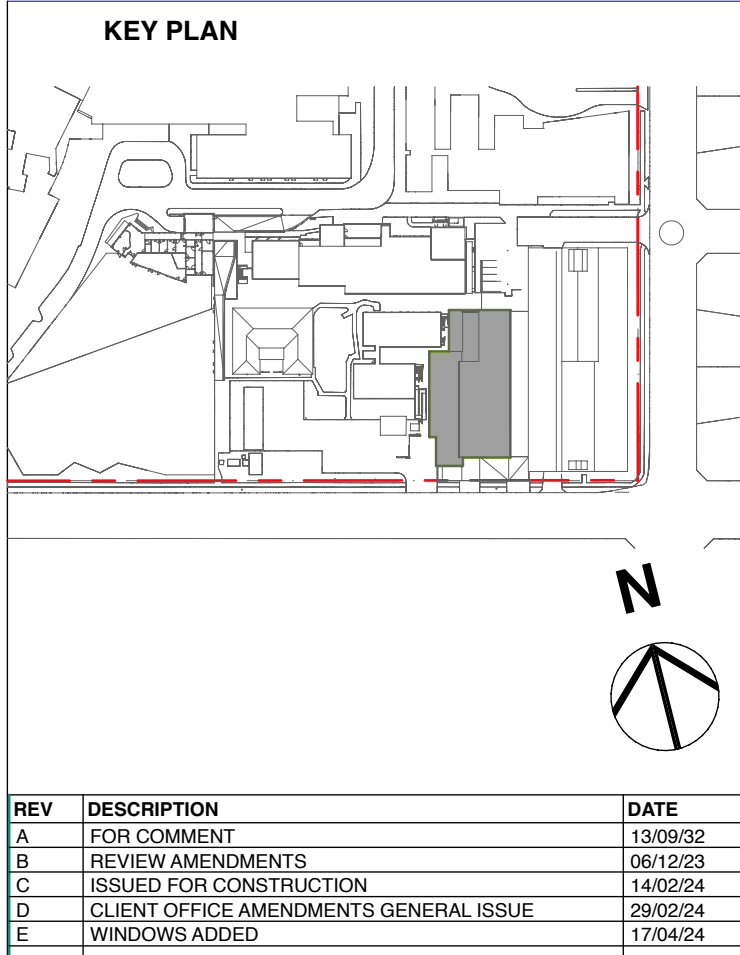
F



01 PARTITION PLAN 1:100



02 WALL TYPES 1:10



REV	DESCRIPTION	DATE
A	FOR COMMENT	13/03/22
B	REVIEW AMENDMENTS	06/12/23
C	ISSUED FOR CONSTRUCTION	14/03/24
D	CLIENT OFFICE AMENDMENTS GENERAL ISSUE	28/02/24
E	WINDOWS ADDED	17/04/24

COPYRIGHT

ALL RIGHTS RESERVED. THIS WORK IS COPYRIGHTED AND CANNOT BE REPRODUCED OR COPIED IN ANY FORM OR BY ANY MEANS (GRAPHIC, ELECTRONIC OR MECHANICAL, INCLUDING PHOTOCOPYING WITHOUT THE WRITTEN PERMISSION OF THE PRINCIPAL, UNDER THE TERMS OF THE CONTRACT. ANY LICENCE, EXPRESS OR IMPLIED, TO USE THE DOCUMENT FOR ANY PURPOSE WHATSOEVER IS RESTRICTED TO THE TERMS OF THE AGREEMENT OR IMPLIED AGREEMENT WITH THE PRINCIPAL UNDER THE TERMS OF THE CONTRACT.

DIMENSIONS

USE FIGURED DIMENSIONS. DO NOT SCALE. CONTRACTORS MUST VERIFY ALL DIMENSIONS ON THE SITE BEFORE COMMENCING ANY WORK OR MAKING ANY SHOP DRAWING WHICH MUST BE SUBMITTED AND REVIEWED BEFORE MANUFACTURE.

FIXTURES, FITTINGS & EQUIPMENT SPECIFICATIONS

SUBSTITUTE FIRE EQUIPMENT SPECIFICATIONS

THE FIT-OUT DESIGN AND DOCUMENTATION HAS BEEN COMPLETED ON THE BASIS OF FIRE AND EQUIPMENT ADVISED TO THIS OFFICE AT THE TIME OF BRIEFING THE DESIGN. THE DESIGN PROVIDES FOR FIRE AND EQUIPMENT LOCATIONS, SPATIAL ALLOCATIONS, SERVICES, LOADING AND ACCESS CLEARANCES AND WHERE APPROPRIATE SERVICES REQUIREMENTS. MAKING USE REGARDING SURROUNDING PATTERNS AND FITTINGS. IT SHOULD BE NOTED THAT SUBSTITUTE FIRE OR EQUIPMENT WITH ALTERNATE SPECIFICATIONS SHOULD NOT BE PROVIDED PRIOR TO VALIDATING THOSE SPECIFICATIONS AGAINST THE ITEM CONTROL SCHEDULE AND DESIGN PROVISIONS IN THE MODEL. THIS OFFICE ACCEPTS NO RESPONSIBILITY FOR THE PROCUREMENT OF SUBSTITUTE FIRE AND EQUIPMENT WHICH HAS NOT BEEN REVIEWED AND VALUED AGAINST THE ORIGINAL DESIGN PROVISIONS.

SERVICE POINTS DISCLAIMER

THE SERVICE POINTS IDENTIFIED ON THESE DRAWINGS HAVE BEEN OVERLAPPED FROM THE BUILDING SERVICES ENGINEERING MODEL, AND ARE PROVIDED FOR INFORMATION AND REF-CUT PURPOSES ONLY. WE HAVE BEEN ADVISED BY THE SERVICES ENGINEERS THAT THE POINTS REPRESENTED IN THESE DRAWINGS ARE CORRECT AT THE TIME OF PUBLICATION. THIS OFFICE DOES NOT WARRANT THE ACCURACY OF THIS DATA. REFER TO THE BUILDING SERVICES ENGINEERING DOCUMENTATION FOR THE INSTALLATION OF THE SERVICES POINTS AND THE INTERFACE BETWEEN THE SERVICES POINTS AND THE RESPECTIVE ENGINEERING SYSTEMS.

Architect

Forley + Grant Architecture

Suite 3.0 Level 1, 1141 Botany Lane
Botany NSW 2026
Phone: 0481 622 223
Email: jones@forleygrant.com.au
Hornbush Architect James Grant Reg 1615460

Builder

DONNELLEY CONSTRUCTIONS

Office: 9534 1233
PO Box 8132, Baulkham Hills BC NSW 215

Client

HEALTH INFRASTRUCTURE

Project

NEPEAN HOSPITAL TAM

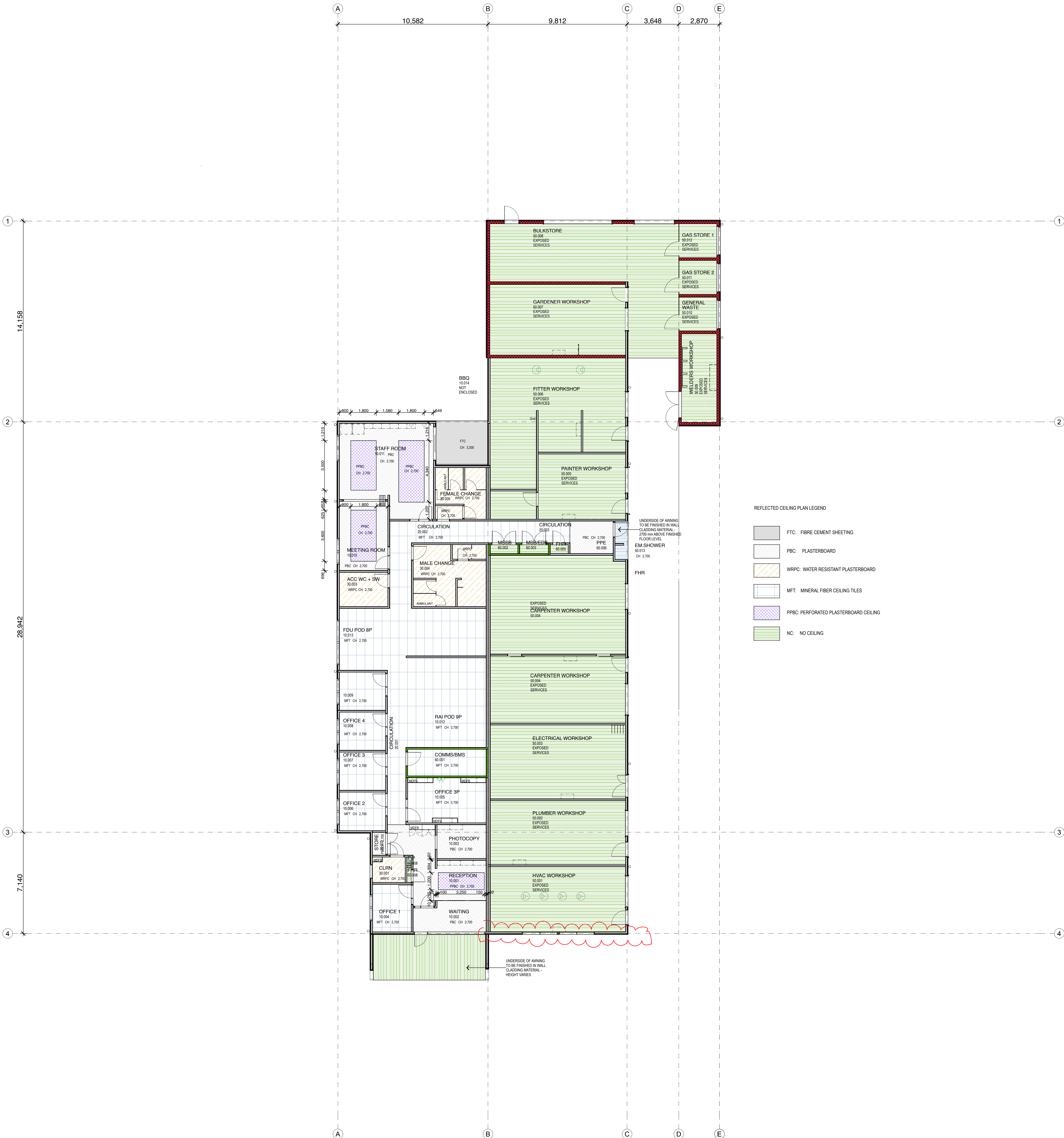
Derby Street, Kingswood, NSW, 2747

Drawing name

PARTITION AND FLOOR FINISHES PLAN

Scale	Date Printed	Drawn	Approved
AS SHOWN @ A0	17/4/2024	JG	JG

Job Number	Drawing Number	REVISION
2124	A-04	E



01 REFLECTED CEILING PLAN 1:100

KEY PLAN

REV	DESCRIPTION	DATE
A	FOR COMMENT	13/03/22
B	REVIEW AMENDMENTS	06/12/23
C	ISSUED FOR CONSTRUCTION	14/03/24
D	CLIENT OFFICE AMENDMENTS GENERAL ISSUE	28/02/24
E	WINDOWS ADDED	17/04/24

ALL RIGHTS RESERVED. THIS WORK IS COPYRIGHT AND CANNOT BE REPRODUCED OR COPIED IN ANY FORM OR BY ANY MEANS (GRAPHIC, ELECTRONIC OR MECHANICAL, INCLUDING PHOTOCOPYING WITHOUT THE WRITTEN PERMISSION OF THE PRINCIPAL, UNDER THE TERMS OF THE CONTRACT ANY LICENCE, EXPRESS OR IMPLIED, TO USE THE DOCUMENT FOR ANY PURPOSE WHATSOEVER IS RESTRICTED. TO THE TERMS OF THE AGREEMENT OR IMPLIED AGREEMENT WITH THE PRINCIPAL, UNDER THE TERMS OF THE CONTRACT.

DIMENSIONS

USE FIGURED DIMENSIONS. DO NOT SCALE. CONTRACTORS MUST VERIFY ALL DIMENSIONS ON THE SITE BEFORE COMMENCING ANY WORK OR MAKING ANY SHOP DRAWING WHICH MUST BE SUBMITTED AND REVIEWED BEFORE MANUFACTURE.

FIXTURES, FITTINGS & EQUIPMENT SPECIFICATIONS

SUBSTITUTE FIRE EQUIPMENT SPECIFICATIONS

THE FIT-OUT DESIGN AND DOCUMENTATION HAS BEEN COMPLETED ON THE BASIS OF FIRE AND EQUIPMENT ADVISED TO THIS OFFICE AT THE TIME OF BRIEFING THE DESIGN. THE DESIGN PROVIDES FOR FIRE AND EQUIPMENT INCORPORATES SPATIAL ALLOCATIONS, SERVICES, LOADING AND ACCESS CLEARANCES AND WHERE APPROPRIATE SERVICES REQUIREMENTS. VARIOUS DUE REGARD FOR SURROUNDING PATTERNS AND FITTINGS. IT SHOULD BE NOTED THAT SUBSTITUTE FIRE OR EQUIPMENT WITH ALTERNATE SPECIFICATIONS SHOULD NOT BE PROVIDED PRIOR TO VALIDATING THOSE SPECIFICATIONS AGAINST THE ITEM CONTROL SCHEDULE AND DESIGN PROVISIONS IN THE MODEL. THIS OFFICE ACCEPTS NO RESPONSIBILITY FOR THE PROCUREMENT OF SUBSTITUTE FIRE AND EQUIPMENT WHICH HAS NOT BEEN REVIEWED AND VALIDATED AGAINST THE ORIGINAL DESIGN PROVISIONS.

SERVICE POINTS DISCLAIMER

THE SERVICE POINTS IDENTIFIED ON THESE DRAWINGS HAVE BEEN OVERLAYS FROM THE BUILDING SERVICES ENGINEERING MODEL, AND ARE PROVIDED FOR INFORMATION AND REF-CUT PURPOSES ONLY. WE HAVE BEEN ADVISED BY THE SERVICES ENGINEER THAT THE POINTS REPRESENTED IN THESE DRAWINGS ARE CORRECT AT THE TIME OF PUBLICATION. THIS OFFICE DOES NOT WARRANT THE ACCURACY OF THIS DATA. REFER TO THE BUILDING SERVICES ENGINEERING DOCUMENTATION FOR THE INSTALLATION OF THE SERVICE POINTS AND THE INTERFACE BETWEEN THE SERVICE POINTS AND THE RESPECTIVE ENGINEERING SYSTEMS.

Architect

Farley + Grant Architecture

Suite 3.0 Level 1, 1141 Botany Lane
Botany NSW 2026
Phone: 0491 622 223
Email: james@fgarch.com.au

Honoured Architect James Grant Reg No 65460

Builder

DONNELLEY CONSTRUCTIONS

Office: 9634 1233
PO Box 8132, Baulkham Hills BC NSW 2155

Client

HEALTH INFRASTRUCTURE

Project

NEPEAN HOSPITAL TAM

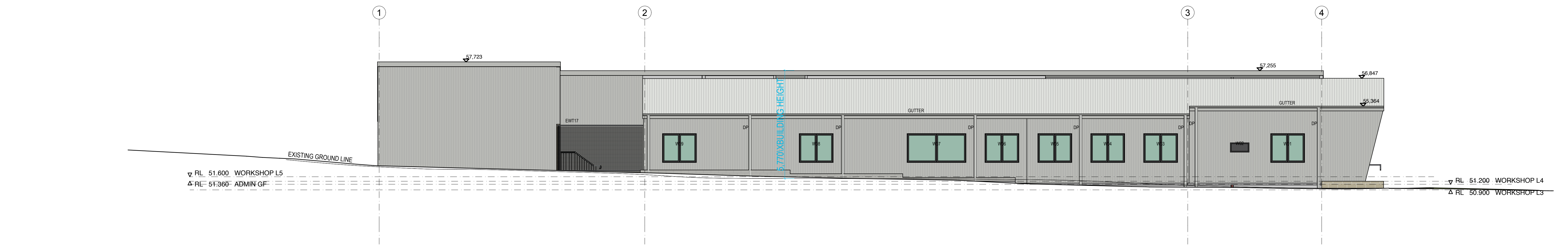
Derby Street, Kingswood, NSW, 2747

Drawing name

REFLECTED CEILING PLAN

Scale	Date Printed	Drawn	Approved
AS SHOWN @ A0	17/4/2024	JG	JG

Job Number	Drawing Number	REVISION
2124	A-06	E



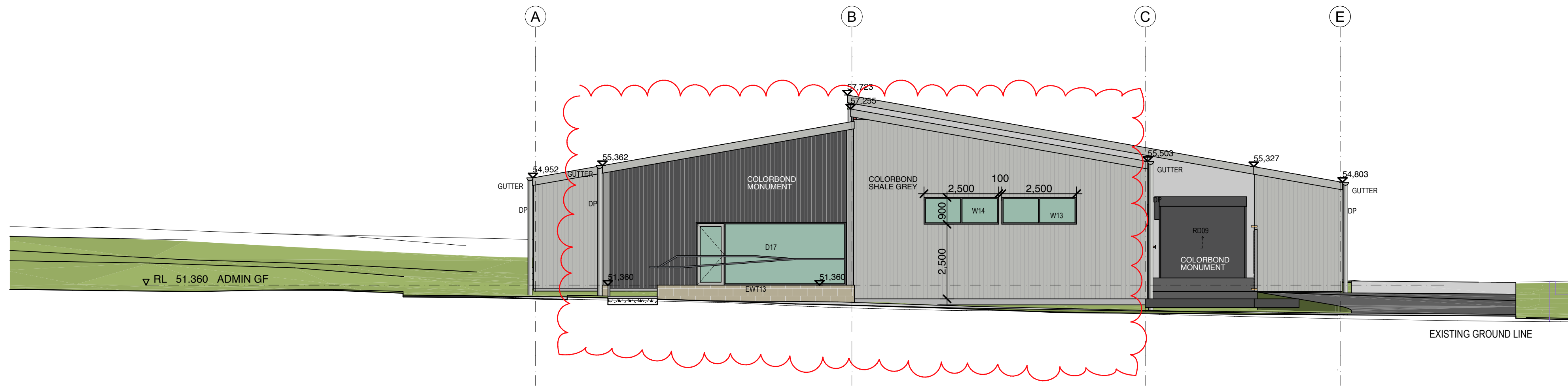
04 WEST ELEVATION 1:100



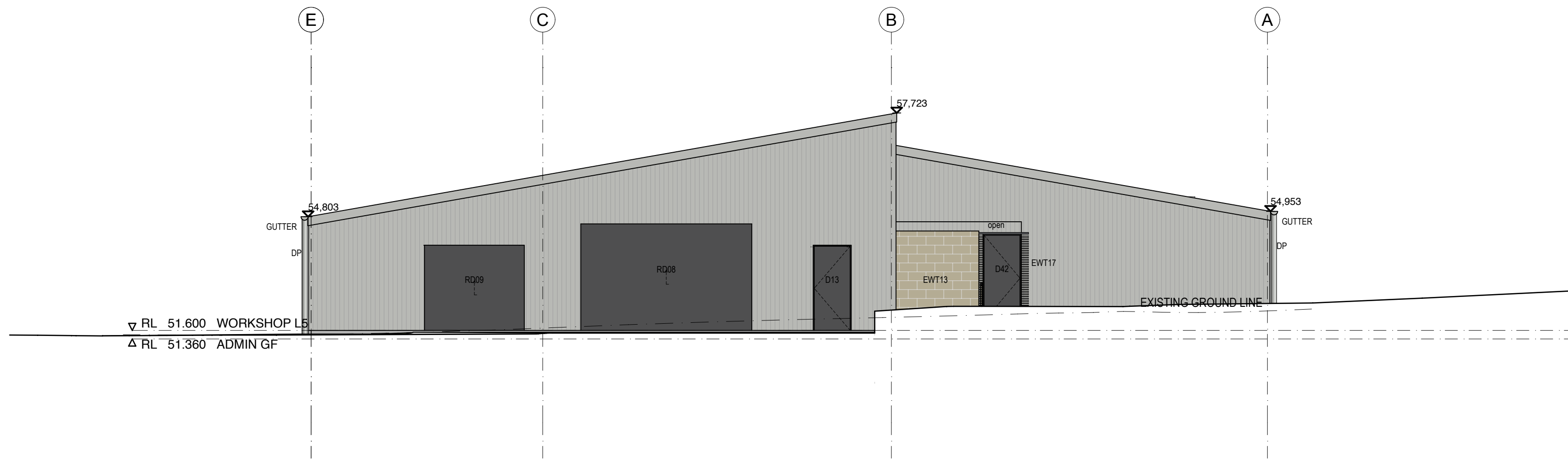
03 EAST ELEVATION 1:100

ALUMINIUM WINDOW FRAMES GENERALLY
ALUMINIUM WINDOW FRAMES ENTRANCE
WALL CLADDING GENERALLY
WALL CLADDING ENTRANCE
ROLLER SHUTTERS
METAL FENCES AND SCREENS
GUTTERS, DOWNPIPES, FLASHINGS

COLORBOND MONUMENT
COLORBOND SHALE GREY
COLORBOND SHALE GREY
COLORBOND MONUMENT
COLORBOND MONUMENT
COLORBOND MONUMENT
COLORBOND SHALE GREY

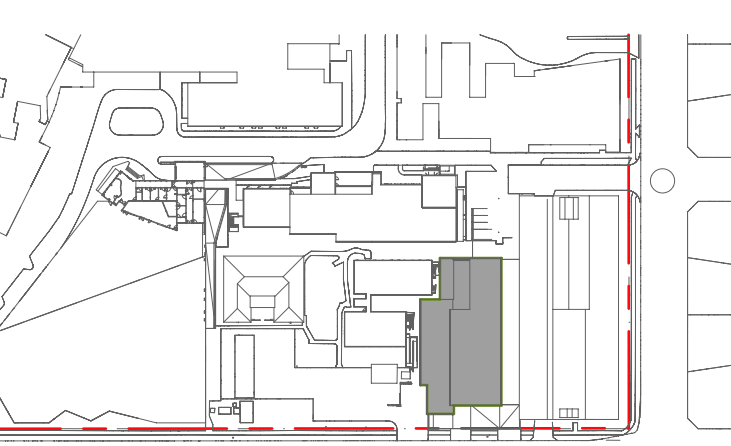


02 SOUTH ELEVATION 1:100



01 NORTH ELEVATION 1:100

KEY PLAN



REV	DESCRIPTION	DATE
A	FOR COMMENT	13/03/22
B	REVIEW AMENDMENTS	06/12/23
C	ISSUED FOR CONSTRUCTION	14/03/24
D	CLIENT OFFICE AMENDMENTS GENERAL ISSUE	28/02/24
E	WINDOWS ADDED	17/04/24

COPYRIGHT
ALL RIGHTS RESERVED. THIS WORK IS COPYRIGHT AND CANNOT BE REPRODUCED OR COPIED IN ANY FORM OR BY ANY MEANS (GRAPHIC, ELECTRONIC OR MECHANICAL, INCLUDING PHOTOCOPYING, WITHOUT THE WRITTEN PERMISSION OF THE PRINCIPAL, UNDER THE TERMS OF THE CONTRACT. ANY LICENCE, EXPRESS OR IMPLIED, TO USE THE DOCUMENT FOR ANY PURPOSE WHATSOEVER IS RESTRICTED TO THE TERMS OF THE AGREEMENT OR IMPLIED AGREEMENT WITH THE PRINCIPAL, UNDER THE TERMS OF THE CONTRACT.

DIMENSIONS
USE FIGURED DIMENSIONS. DO NOT SCALE. CONTRACTORS MUST VERIFY ALL DIMENSIONS ON THE SITE BEFORE COMMENCING ANY WORK OR MAKING ANY SHOP DRAWING WHICH MUST BE SUBMITTED AND REVIEWED BEFORE MANUFACTURE.

SUBSTITUTE FRIDGE EQUIPMENT SPECIFICATIONS
THE FIT-OUT DESIGN AND DOCUMENTATION HAS BEEN COMPLETED ON THE BASIS OF FRIDGE AND EQUIPMENT ADVISED TO THIS OFFICE AT THE TIME OF BRIEFING THE DESIGN. THE DESIGN PROVIDES FOR FRIDGE AND EQUIPMENT INCORPORATING SPATIAL ALLOCATIONS, SERVICES, LOADING AND ACCESS CLEARANCES AND WHERE APPROPRIATE SERVICES REQUIREMENTS. VARIOUS CARE REGARDING SUBSTITUTION OF PATTERNS AND FITTINGS. IT SHOULD BE NOTED THAT SUBSTITUTION OF FRIDGE OR EQUIPMENT WITH ALTERNATE SPECIFICATIONS SHOULD NOT BE PROCEED PRIOR TO VALIDATING THOSE SPECIFICATIONS AGAINST THE ITEM CONTROL SCHEDULE AND DESIGN PROVISIONS IN THE MODEL. THIS OFFICE ACCEPTS NO RESPONSIBILITY FOR THE PROCUREMENT OF SUBSTITUTE FRIDGE AND EQUIPMENT WHICH HAS NOT BEEN REVIEWED AND VALIDATED AGAINST THE ORIGINAL DESIGN PROVISIONS.

SERVICE POINTS DISCLAIMER
THE SERVICE POINTS IDENTIFIED ON THESE DRAWINGS HAVE BEEN OVERLAYS FROM THE BUILDING SERVICES ENGINEERING MODEL, AND ARE PROVIDED FOR INFORMATION AND REF-CUT PURPOSES ONLY. WE HAVE BEEN ADVISED BY THE SERVICES ENGINEERS THAT THE POINTS REPRESENTED IN THESE DRAWINGS ARE CORRECT AT THE TIME OF PUBLICATION. THIS OFFICE DOES NOT WARRANT THE ACCURACY OF THIS DATA. REFER TO THE BUILDING SERVICES ENGINEERING DOCUMENTATION FOR THE NOTIFICATION OF THE SERVICE POINTS AND THE INTERFACE BETWEEN THE SERVICE POINTS AND THE RESPECTIVE ENGINEERING SYSTEMS.

Architect
Forley + Grant Architecture
Suite 3.0 Level 1, 1141 Botany Lane
Botany NSW 2026
Phone: 0491 822 223
Email: james@fgarch.com.au
Homeschool Architect James Grant Reg No 45460

Builder
DONNELLEY CONSTRUCTIONS
Office: 9634 1233
PO Box 8132, Baulkham Hills BC NSW 215

Client
HEALTH INFRASTRUCTURE

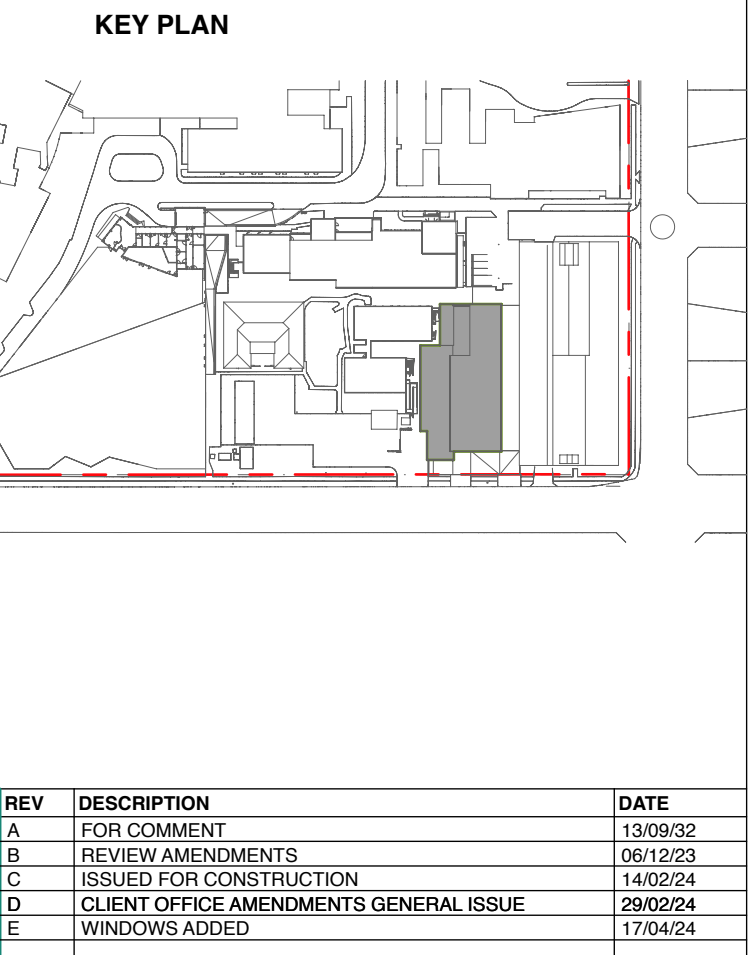
Project
NEPEAN HOSPITAL TAM

Derby Street, Kingswood, NSW, 2747

Drawing name
ELEVATIONS

Scale	Date Printed	Drawn	Approved
AS SHOWN @ A0	17/4/2024	JG	JG

Job Number	Drawing Number	REVISION
2124	A-07	E

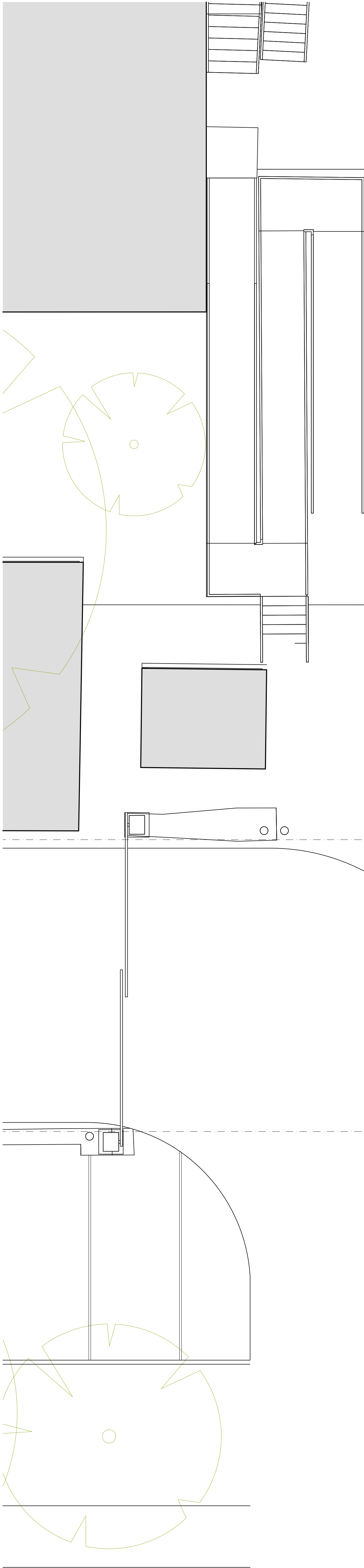
[illegible][illegible]

Builder
 **DONNELLEY**
CONSTRUCTIONS
Office: 9634 1233



Project

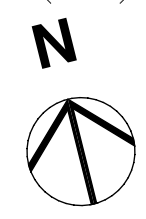
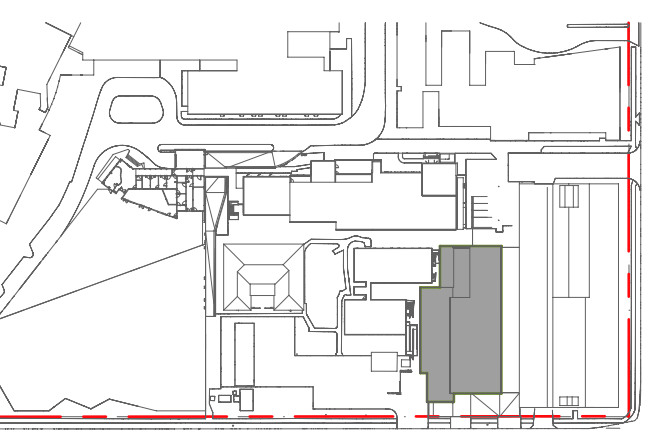
NEPEAN HOSPITAL TAM



01 FITOUT PLAN PART 1 1:50

B

KEY PLAN



REV	DESCRIPTION	DATE
A	FOR COMMENT	13/03/22
B	REVIEW AMENDMENTS	06/12/23
C	ISSUED FOR CONSTRUCTION	14/03/24
D	CLIENT OFFICE AMENDMENTS GENERAL ISSUE	28/02/24
E	WINDOWS ADDED	17/04/24

COPYRIGHT
ALL RIGHTS RESERVED. THIS WORK IS COPYRIGHTED AND CANNOT BE REPRODUCED OR COPIED IN ANY FORM OR BY ANY MEANS (GRAPHIC, ELECTRONIC OR MECHANICAL, INCLUDING PHOTOCOPYING WITHOUT THE WRITTEN PERMISSION OF THE PRINCIPAL, UNDER THE TERMS OF THE CONTRACT ANY LICENCE, EXPRESS OR IMPLIED, TO USE THE DOCUMENT FOR ANY PURPOSE WHATSOEVER IS RESTRICTED TO THE TERMS OF THE AGREEMENT OR IMPLIED AGREEMENT WITH THE PRINCIPAL UNDER THE TERMS OF THE CONTRACT.

DIMENSIONS
USE FIGURED DIMENSIONS. DO NOT SCALE. CONTRACTORS MUST VERIFY ALL DIMENSIONS ON THE SITE BEFORE COMMENCING ANY WORK OR MAKING ANY SHOP DRAWING WHICH MUST BE SUBMITTED AND REVIEWED BEFORE MANUFACTURE.

FIXTURES, FITTINGS & EQUIPMENT SPECIFICATIONS
SUBSTITUTE FIRE EQUIPMENT SPECIFICATIONS
THE FITOUT DESIGN AND DOCUMENTATION HAS BEEN COMPLETED ON THE BASIS OF THE DESIGN PROVIDER'S REQUIREMENTS. THE DESIGN PROVIDER HAS ADVISED THAT THE DESIGN PROVIDER'S REQUIREMENTS FOR FIRE AND EQUIPMENT INCORPORATES SPATIAL ALLOCATIONS, SERVICES, LOADING AND ACCESS CLEARANCES AND WHERE APPROPRIATE SERVICES REQUIREMENTS. VARIOUS DUE REGARD FOR SUBMITTING PATTERNS AND FITTINGS. IT SHOULD BE NOTED THAT SUBSTITUTE FIRE OR EQUIPMENT WITH ALTERNATE SPECIFICATIONS SHOULD NOT BE PROVIDED PRIOR TO VALIDATING THOSE SPECIFICATIONS AGAINST THE ITEM CONTROL SCHEDULE AND DESIGN PROVISIONS IN THE MODEL. THIS OFFICE ACCEPTS NO RESPONSIBILITY FOR THE PROCUREMENT OF SUBSTITUTE FIRE AND EQUIPMENT WHICH HAS NOT BEEN REVIEWED AND VALUED AGAINST THE ORIGINAL DESIGN PROVISIONS.

SERVICE POINTS DISCLAIMER
THE SERVICE POINTS IDENTIFIED ON THESE DRAWINGS HAVE BEEN OVERLAYED FROM THE BUILDING SERVICES ENGINEERING RECORD, AND ARE PROVIDED FOR INFORMATION AND REFERENCE PURPOSES ONLY. WE HAVE BEEN ADVISED BY THE SERVICES ENGINEER THAT THE POINTS REPRESENTED ON THESE DRAWINGS ARE CORRECT AT THE TIME OF PUBLICATION. THIS OFFICE DOES NOT WARRANT THE ACCURACY OF THIS DATA. REFER TO THE BUILDING SERVICES ENGINEERING DOCUMENTATION FOR THE INSTALLATION OF THE SERVICES POINTS AND THE INTERFACE BETWEEN THE SERVICES POINTS AND THE RESPECTIVE ENGINEERING SYSTEMS.

Architect
Forley + Grant Architecture
Suite 30 Level 1, 1141 Botany Lane
Botany NSW 2020
Phone: 0491 822 223
Email: james@fgarch.com.au
Honiwoted Architect James Grant Reg 160 65460

Builder
DONNELLEY CONSTRUCTIONS
Office: 9634 1233
PO Box 8132, Baulkham Hills BC NSW 215

Client
HEALTH INFRASTRUCTURE

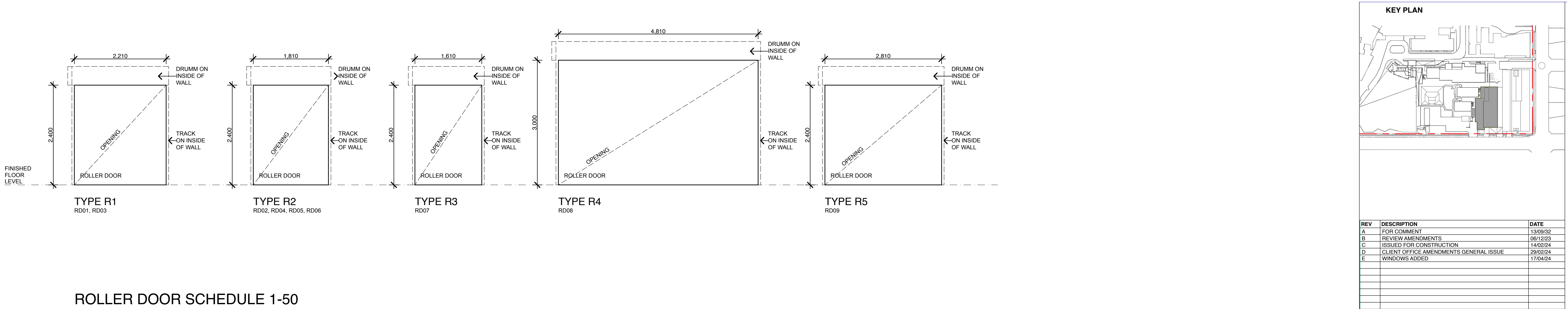
Project
NEPEAN HOSPITAL TAM

Derby Street, Kingswood, NSW, 2747

Drawing name
FITOUT PLAN PART 1

Scale	Date Printed	Drawn	Approved
AS SHOWN @ A0	17/4/2024	JG	JG

Job Number	Drawing Number	REVISION
2124	A-09	E

[illegible]

COPYRIGHT

ALL RIGHTS RESERVED. THIS WORK IS COPYRIGHTED AND CANNOT BE REPRODUCED OR USED IN ANY FORM OR BY ANY MEANS, ELECTRONIC OR MECHANICAL, INCLUDING PHOTOCOPYING, WITHOUT THE WRITTEN PERMISSION OF THE PERSONAL OR CORPORATE OWNER. THIS DOCUMENT IS THE PROPERTY OF THE PERSONAL OR CORPORATE OWNER. THE DOCUMENT FOR ANY PURPOSE WHATSOEVER IS RESTRICTED TO THE TERMS OF THE LICENSE OR IF UNLICENSED, REMAINS UNDER THE TERMS OF THE CONTRACT.

DIMENSIONS

USE FIGURED DIMENSIONS, DO NOT SCALE. CONTRACTORS MUST VERIFY ALL DIMENSIONS ON THE SITE BEFORE COMMENCING ANY WORK. DIMENSIONS OF MATERIALS WHICH MUST BE SUBMITTED AND REVIEWED BEFORE MANUFACTURE.

FITURES, FITTINGS & EQUIPMENT SPECIFICATIONS

THE FIT-OUT SECTION AND DOCUMENTATION HAS BEEN COMPLETED ON THE BASIS OF THE ASSUMPTIONS SET OUT IN THE FIT-OUT SECTION AND THE SPECIFICATIONS AND THE DESIGN PROVISIONS FOR F&E AND EQUIPMENT. CONTRACTORS SHALL OBTAIN ALL NECESSARY APPROVED SPECIFICATIONS, REQUIREMENTS, MATERIALS, RECORDS FOR SURROUNDINGS AND MATERIALS. CONTRACTORS SHALL BE RESPONSIBLE FOR OBTAINING ALL MATERIALS WITH ULTIMATE SPECIFICATIONS NOT ACCEPTED OR PROHIBITED FOR UPDATING OR REPLACING. CONTRACTORS SHALL BE RESPONSIBLE FOR OBTAINING ALL MATERIALS PROVIDERS IN THE MODEL. THIS OFFICE ACCEPTS NO RESPONSIBILITY FOR THE MATERIALS PROVIDED BY THE CONTRACTOR. THE CONTRACTOR SHALL BE RESPONSIBLE FOR THE MATERIALS REVIEWED AND VALIDATED AGAINST THE ORIGINAL DESIGN PROVIDERS.

SERVICE POINTS DISCLAIMER

THE SERVICE POINTS IDENTIFIED ON THESE DRAWINGS HAVE BEEN OBTAINED FROM THE CONTRACTOR'S RECORDS AND ARE PROVIDED FOR INFORMATION ONLY. THE CONTRACTOR AND SET-OUT PURPOSES ONLY. WE HAVE BEEN ADVISED BY THE SERVICES ENGINEER THAT THE CONTRACTOR HAS OBTAINED THE SERVICE POINTS FROM THE SERVICES ENGINEER. THIS OFFICE DOES NOT GUARANTEE THE ACCURACY OF THE SERVICE POINTS IDENTIFIED ON THESE DRAWINGS. THE CONTRACTOR SHALL BE RESPONSIBLE FOR THE INSTALLATION OF THE SERVICE POINTS AND THE DISCREPANCY BETWEEN THE SERVICE POINTS AND THE RESPECTIVE ENGINEERING SYSTEMS.

Job Number	Drawing Number	REVISION
------------	----------------	----------

Job Number	Drawing Number	REVISION
------------	----------------	----------

2124 **A-11** **E**

